

# Reflector Lamps



口金タイプ  
GX5.3

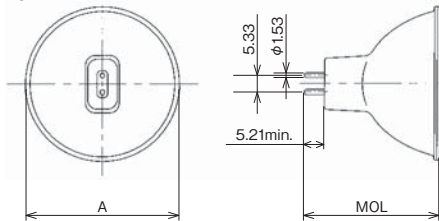
## 50mm(MR16) Dichroic Reflector

### ■口金タイプ:GX5.3

形式 Lamp Type	定格電圧 Voltage (V)	定格電力 Wattage (W)	色温度 Color temperature (K)	定格寿命 Life (h)	点灯の向き Burning position	寸法 Dimension			反射鏡 タイプ Reflector type	ANSI	Fig. No.	用途 Main application												
						ワーキング ディスタンス Working distance (mm)	全長 MOL Max (mm)	外径 Outside diameter A Max (mm)				Projector	OHP	Microfilm	Fiber	Medical	Industrial	Photo finishing	Video/Movie	SSTV/Entertainment	Other			
EKZ 10.8-30	10.8	30	3100	200	BD/HOR	38.1	46	50.7	Specular	EKZ	1	○												
EPT 10.8-42	10.8	42	2900	50	BD/HOR	38.1	46	50.7	Faceted	EPT	1			○										
EPN 12-35	12	35	3300	50	BD/HOR	29	46	50.7	Specular	EPN	1	○												
EXV 12-100	12	100	3350	50	BD/HOR	-	46	50.7	Faceted	EXV	1										○			
DED 13.8-85	13.8	85	3150	1000	BD/HOR	165	46	50.7	Faceted	DED	1			○										
EPV14.5-90	14.5	90	3150	500	BD/HOR	155.2	46	50.7	Faceted	EPV	1			○										
ENW 19-80	19	80	3200	400	BD/HOR	44.5	46	50.7	Specular	ENW	1	○												
DDM 19-80	19	80	3350	50	BD/HOR	152.4	46	50.7	Faceted	DDM	1	○		○										
JCR 20-115	20	115	3200	500	BD/HOR	-	46	50.7	Specular	-	1			○										
DDL 20-150	20	150	3150	500	BD/HOR	194.5	46	50.7	Faceted	DDL	1			○	○									
JCR 20-150 H5	20	150	3150	500	BD/HOR	194.5	46	50.7	Faceted	-	1				○		○							
DDS 21-80	21	80	3125	500	BD/HOR	165	46	50.7	Faceted	DDS	1			○										
JCR 21-150/AL	21	150	3200	200	BD/HOR	44.5	46	50.7	Specular*	EKE/AL	1									○			○	
JCR 21-150 10H/5	21	150	3200	1000	BD/HOR	44.5	46	50.7	Specular	EKE/10H	1					○	○							
EKE 21-150	21	150	3250	200	BD/HOR	44.5	46	50.7	Specular	EKE	1	○			○									
EKE 21-150 -2	21	150	3250	200	BD/HOR	44.5	46	50.7	Faceted	EKE/FA	1	○			○									
JCR 21-150 /A	21	150	3250	200	BD/HOR	43	46	50.7	Specular	-	1				○									
JMR 21-150	21	150	3250	200	BD/HOR	48.8	46	50.7	Stippled	-	1				○	○								
JCR 21-150 6H/5	21	150	3250	600	BD/HOR	44.5	46	50.7	Specular	EKE/6H	1				○	○								
EJA 21-150	21	150	3400	40	BD/HOR	28	46	50.7	Specular	EJA	1	○			○									
EJM 21-150	21	150	3400	40	BD/HOR	38.1	46	50.7	Specular	EJM	1	○			○									
EJV 21-150	21	150	3400	40	BD/HOR	44.5	46	50.7	Specular	EJV	1	○												
ELD 21-150	21	150	3400	40	BD/HOR	50.8	46	50.7	Stippled	ELD	1	○												
JER 21-150	21	150	3400	40	BD/HOR	50.8	46	50.7	Faceted	-	1									○				
EFW 24-200	24	200	3350	50	BD/HOR	298.5	46	50.7	Faceted	EFW	1			○										
EJL 24-200	24	200	3400	50	BD/HOR	31.7	46	50.7	Specular	EJL	1	○												
JTR 24-250 10H/5-AL	24	250	3200	1000	BD/HOR	31.7	46	50.7	Specular*	-	1									○			○	
ELC 24-250	24	250	3400	50	BD/HOR	31.7	46	50.7	Specular	ELC	1	○								○	○		○	
ELC 24-250 /FA	24	250	3400	50	BD/HOR	31.7	46	50.7	Faceted	ELC/FA	1	○								○	○		○	
JCR 24-250 5H	24	250	3400	500	BD/HOR	31.7	46	50.7	Specular	ELC/5H	1												○	
JCR 24-250 10H/5	24	250	3400	1000	BD/HOR	31.7	46	50.7	Specular	ELC/10H	1												○	
JER 24-250	24	250	-	50	BD/HOR	31.7	46	50.7	Specular	-	1									○				
ELC 25-250	25	250	3400	50	BD/HOR	31.7	46	50.7	Specular	-	1	○								○	○		○	
ENZ 30-50	30	50	3400	25	BD/HOR	29	46	50.7	Specular	ENZ	1	○				○					○		○	
ERV 36-340	36	340	3300	75	BD/HOR	298.5	46	50.7	Faceted	ERV	1			○										
JMR 36-340 /5	36	340	3400	35	BD/HOR	82	46	50.7	Specular	-	1									○				

\*アルミ膜反射鏡 / Aluminium coated reflector

Fig.1









口金タイプ  
GU5.3



口金タイプ  
EZ10

## 50mm(MR16) Dichroic Reflector

■口金タイプ:GU5.3/EZ10 Daylight (一般照明 / 店舗照明 / 美術館・博物館・画廊照明) General lighting/ Shops, Museums, Art Galleries)

形式 Lamp Type	定格電圧 Voltage (V)	定格電力 Wattage (W)	ビーム角 (度)	定格寿命 Life (h)	ビーム光束 (lm)	中心光度 (cd)	色温度 Color temperature (K)	外径 Outside diameter A Max (mm)	全長 MOL Max (mm)	口金形式 Base	Fig. No.
JR 12-50 AKW/5-47K	12	50	36	3000	230	1100	4700	50	51.5	GU5.3	10
JR 12-50 AKW/5EZ-47K	12	50	36	3000	230	1100	4700	50	69.5	EZ10	11

Fig.10

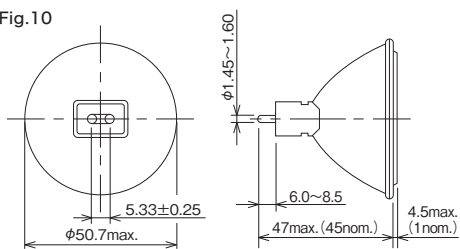


Fig.11

